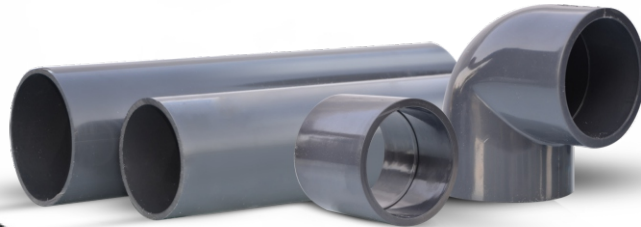


Quality
is our first priority

P POLO[®]

AL-RAAI PLASTIC WORKS
ISO 9001 CERTIFIED COMPANY



PRESSURE PIPES
& FITTINGS

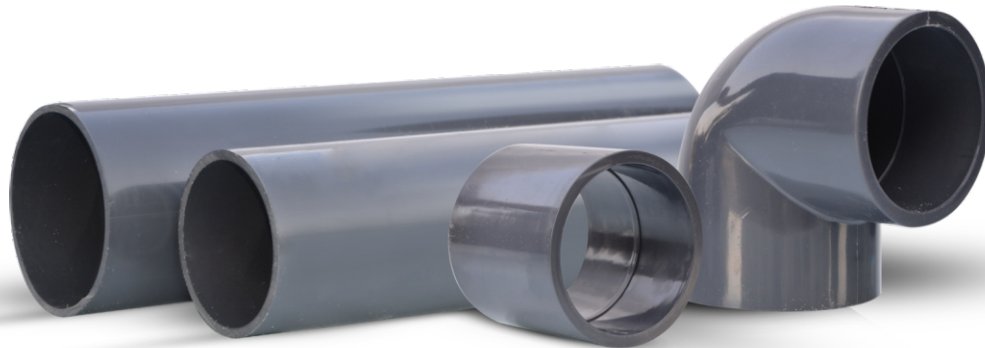
UPVC PRESSURE PIPES & FITTINGS

STANDARDS & SPECIFICATIONS

- BS-3505 & PS-3051
- EN-1401
- ASTM D-1785

AVAILABLE SIZES

- Size Range: 1/2" to 24"



NOTE:

- Polo Pipes specializes in the custom manufacture of pipes up to 630mm in diameter, considering the specific requirements of the customer.

SALIENT FEATURES

Robust Pressure Tolerance:

Engineered to handle high pressure situations with reliability.

Weatherproof and Durable:

Resistant to weather and wear, ensuring longevity.

Corrosion-Resistant:

Withstands chemicals and corrosion, making it versatile for various applications.


POLO PRESSURE PIPES FOR COLD POTABLE DRINKING WATER

AS PER BS-3505/PS-3051

STANDARD SPECIFICATION BS-3505 EQUIVALENT TO PS-3051										
NOMINAL SIZE	OUTTER DIA (MM)		CLASS "B" 6 BAR		CLASS "C" 9 BAR		CLASS "D" 12 BAR		CLASS "E" 15 BAR	
			WALL THICKNESS		WALL THICKNESS		WALL THICKNESS		WALL THICKNESS	
INCH	MIN.	MAX.	MIN.	MAX.	MIN.	MAX.	MIN.	MAX.	MIN.	MAX.
1/2"	21.2	21.5	-	-	-	-	-	-	1.7	2.1
3/4"	26.6	26.9	-	-	-	-	-	-	1.9	2.5
1"	33.4	33.7	-	-	-	-	-	-	2.2	2.7
1 1/4"	42.1	42.4	-	-	-	-	2.2	2.7	2.7	3.2
1 1/2"	48.1	48.4	-	-	-	-	2.5	3.0	3.1	3.7
2"	60.2	60.5	-	-	2.5	3.0	3.1	3.7	3.9	4.5
2 1/2"	75.0	75.3	-	-	3.0	3.5	3.9	4.5	4.8	5.5
3"	88.7	89.1	2.9	3.4	3.5	4.1	4.6	5.3	5.7	6.6
4"	114.1	114.5	3.4	4.0	4.5	5.2	6.0	6.9	7.3	8.4
5"	140.1	140.4	3.8	4.4	5.5	6.4	7.3	8.4	9.0	10.4
6"	168.0	168.5	4.5	5.2	6.6	7.6	8.8	10.2	10.8	12.5
7"	193.5	194	5.2	6.0	7.7	8.9	10.1	11.7	12.4	14.3
8"	218.8	219.4	5.3	6.1	7.8	9.0	10.3	11.9	12.6	14.5
10"	272.6	273.4	6.6	7.6	9.7	11.2	12.8	14.8	15.7	18.1
12"	323.4	324.3	7.8	9.0	11.5	13.3	15.2	17.5	18.7	21.6
14"	355.0	356	8.5	9.8	12.6	14.5	16.7	19.2	20.5	23.6
16"	405.9	406.9	9.7	11.2	14.5	16.7	19.0	21.9	23.4	27
18"	456.7	457.7	11.0	12.7	16.3	18.8	21.4	24.6	-	-
20"	507.5	508.5	12.2	13.7	18.1	20.2	-	-	-	-
22"	558.6	559.3	13.4	15.0	19.9	22.1	-	-	-	-
24"	609.1	610.1	14.6	16.3	21.7	24.1	-	-	-	-

- ➔ Pipes upto 12" Are normally available from Stock other Large Diameter Pipes can be Manufactured on request max. 24".
- ➔ Standard Length : 4m (13 ft) & 6m (20 ft) other length can be manufactured on request.
- ➔ Pipes of nominal diameter or above 8" are normally socketed at one end (to suit either rubber ring or solvent cement joint).

 polopipes

 polopipes.com.pk



FIND US



HEAD OFFICE

Plot # 313, Al-Raai Road, Jia Musa
Shahdara, Lahore-Pakistan